

Performance

Lifting height — on stabilisers	15700.0 mm
Lifting height — on tyres	13800.0 mm
Rated capacity	3800 kg
Capacity (at max. height on stabilisers)	2000 kg
Capacity (at max. height on tyres)	600 kg
Capacity (at max. reach on stabilisers)	300 kg
Capacity (at max. reach on tyres)	300 kg
Max. reach on stabilisers	13350.0 mm
Max. reach on tyres	8100.0 mm

Weights

Weight (unladen)	13700 kg
------------------	----------

Traction

Standard tyres	400/70x20 inch
Low speed (forward/reverse)	10.0 km/h
High speed (forward/reverse)	26.0 km/h
Gradeability	22°

Drive System

Main drive	Servo-controlled 2-speed
Transmission	Hydrostatic with variable load sensing pump

Engine

Make / Model	Kubota / V3800 CR-TI - Stage IIIB
Fuel	Diesel
Cooling	Liquid
Rated power (ISO 14396:2002) at 2200 RPM	74.5 kW
Maximum torque at 1500 RPM	335.0 Nm
Number of cylinders	4
Displacement	3769 cm ³

Hydraulic System

Pump type	Gear pump
Working pressure	230.00 bar

Cycle Times

Telescope in time at max. reach - no load	34.2 s
Telescope out time at max. reach - no load	21.9 s

Brakes

Engine braking	Hydrostatic
Parking and emergency brake	Negative brake with electro control on rear axle

Fluid Capacities

Axles and reduction gears front / rear	7.5/7.75 L
Engine oil	13.20 L
Fuel tank	180.00 L
Hydraulic reservoir	170.00 L

Standard Features

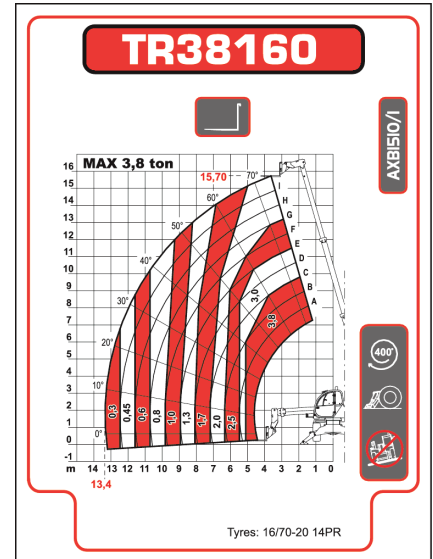
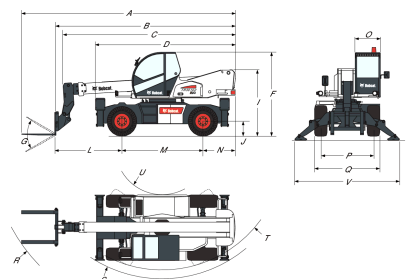
Man platform ready	Road lights
Air conditioning	Pneumatic seat (compulsory with double joystick)
Hydrostatic transmission	Controls with double joystick
Two way hydraulic supply at the end of the boom	Electric contact on boom head
Back-up alarm	Pallet fork transversal block
Boom stop	Radio with CD player
Lockable fuel cap	Second auxiliary hydraulic line with electrical line
Heating, demisting and ventilation	Sun visor
Carriage with manual attachment lock	Work light on top of cabin
ROPS/FOPS operator cab	Boom light
Front and rear washer/wipers	

Environmental

Operator noise level (LpA) (EN 12053)	103 dB(A)
Whole body vibration (EN 13059)	1.50 ms ⁻²
Hand-arm vibration (ISO 5349-1)	4.50 ms ⁻²

Load Charts

On stabilisers, with forks, 90°


Dimensions


(A)	7699.0 mm	(N)	1175.0 mm
(B)	6575.0 mm	(O)	980.0 mm
(C)	6290.0 mm	(P)	1920.0 mm
(D)	5116.0 mm	(Q)	2380.0 mm
(F)	3000.0 mm	(R)	5265.0 mm
(G)	130°	(S)	4750.0 mm
(I)	2380.0 mm	(T)	4430.0 mm
(J)	510.0 mm	(U)	1700.0 mm
(L)	2430.0 mm	(V)	3968.0 mm
(M)	2950.0 mm		

Options

Custom colour	TÜV homologation
Windscreen grill	Under chassis protection
Anti-theft immobiliser	2-speed accelerator
Auto-cleaning air prefilter	adjustment for remote
Centering handler and	control
positive/negative jib	Carriage with hydraulic
pre-arrangement	attachment lock
Cold weather kit	Cold start
Remote control	Electronic accelerator
	adjustment for remote
	control
	Webasto heater (Cold
	weather kit is compulsory)